

Repetitive binge-like consumption based on the Drinking-in-the-Dark model alters the microglial population in the mouse hippocampus

James C. Nelson^{1,†}, Eva Greengrove^{2,†}, Kala N. Nwachukwu¹, Isabella R. Grifasi², S. Alex Marshall^{1,2,*}

¹Department of Biological & Biomedical Sciences, North Carolina Central University, Durham, NC 27707, USA

²Department of Basic Pharmaceutical Sciences, Fred P. Wilson School of Pharmacy, High Point University, High Point, NC 27268, USA

*Correspondence: alex.marshall@nccu.edu (S. Alex Marshall)

† These authors contributed equally.

DOI: [10.31083/j.jin2004094](https://doi.org/10.31083/j.jin2004094)

This is an open access article under the CC BY 4.0 license (<https://creativecommons.org/licenses/by/4.0/>).

Submitted: 28 September 2021 Revised: 5 November 2021 Accepted: 23 November 2021 Published: 30 December 2021

Alcoholism causes various maladaptations in the central nervous system, including the neuroimmune system. Studies of alcohol-induced dysregulation of the neuroimmune system generally focus on alcohol dependence and brain damage, but our previous research indicates that repetitive binge-like consumption perturbs cytokines independent of cell death. This paper extends that research by examining the impact of binge-like consumption on microglia in the hippocampus and the amygdala. Microglia were assessed using immunohistochemistry following binge-like ethanol consumption based on Drinking-in-the-Dark model. Immunohistochemistry results showed that binge-like ethanol consumption caused an increase in Iba-1 immunoreactivity and the number of Iba-1+ cells after one Drinking-in-the-Dark cycle. However, after three Drinking-in-the-Dark cycles, the number of microglia decreased in the hippocampus. We showed that in the dentate gyrus, the average immunoreactivity/cell was increased following ethanol exposure despite the decrease in number after three cycles. Likewise, Ox-42, an indicator of microglia activation, was upregulated after ethanol consumption. No significant effects on microglia number or immunoreactivity (Iba-1 nor Ox-42) were observed in the amygdala. Finally, ethanol caused an increase in the expression of the microglial gene Aif-1 during intoxication and ten days into abstinence, suggesting persistence of ethanol-induced upregulation of microglial genes. Altogether, these findings indicate that repetitive binge-like ethanol is sufficient to elicit changes in microglial reactivity. This altered neuroimmune state may contribute to the development of alcohol use disorders.

Keywords

Alcohol use disorder; Microglia; Neuroimmune; Amygdala; Hippocampus; Binge-like drinking

1. Introduction

Excessive alcohol consumption has been linked to many social and health consequences, including the development of alcohol use disorders (AUDs) [1, 2]. The term AUDs is an umbrella term that includes a variety of problematic drinking behaviors like alcohol dependence, repetitive binge drinking, and any ethanol consumption by at-risk populations (e.g., pregnant women or underage individuals). How-

ever, most of the societal problems associated with AUDs occur due to binge drinking [3]. Binge drinking is a form of heavy ethanol consumption that results in blood ethanol concentrations (BECs) greater than 80 mg/dL [4]. This is normally achieved with 4–5 drinks within two hours. Many theorize that repetitive binge drinking fundamentally changes normal neurobiological functions altering the pharmacological properties of alcohol and contributing to the development of alcohol dependence [5–7]. Manipulating the neuroplastic changes that occur due to binge drinking may be vital in curbing excessive alcohol consumption and reducing the propensity of AUD development. Although alcohol abuse can elicit maladaptation in various biologic systems, our work focuses on alcohol-induced microglial reactivity after repetitive binge-like alcohol consumption in the Drinking-in-the-Dark (DID) model to recapitulate human binge consumption [8].

Microglia are often called the “central nervous system macrophages” because they have a shared hematopoietic lineage with peripheral macrophages and have phagocytic activity within the brain [9]. Microglia were traditionally studied as responsive agents to infections that could mediate neurodegeneration and cell death [10]. However, the continuum of microglial activation and the corresponding variety of their homeostatic contributions to maintaining and/or restoring neuronal function has continued to rise in the literature [11, 12]. We now recognize that microglia have various functions independent of neurodegeneration in the healthy brain, including contributions to synaptic pruning [13] and constant surveillance of micro-environmental fluctuations [14, 15]. In the AUD field, most studies examining the microglial response to alcohol have focused on models of alcohol dependence [16, 17] and/or alcohol-induced neurodegeneration [18–21]. However, most people who binge drink neither experience dependence nor have evidence of neurodegeneration [22]. Determining the unique maladaptation from binge drinking is necessary as they are often distinct from those ob-

served in dependence [23, 24]. For example, many postulate that the drive to consume alcohol switches from positive to negative reinforcement as individuals become more dependent on alcohol [25, 26]. Similarly changes in the microglial response may initially alter one function in the central nervous system during binge drinking but engage in more proinflammatory actions during dependence. Understanding the effects of alcohol on microglia under different types/stages of an AUD is crucial to determine the role of microglia within alcohol misuse and how microglia contribute to alcohol addiction.

The DID model is uniquely suited to capture the window of binge-like alcohol consumption before dependence-like phenotypes and without evidence of alcohol-induced neurodegeneration [8, 27]. For example, following multiple weeks of ethanol exposure in the DID model, it has been reported that there are no indices of withdrawal or other phenotypes associated with alcohol dependence [28, 29]. Using a self-administration model of binge-like consumption, this rodent model repeatedly achieves BECs comparable to those observed in human binge drinkers [30, 31]. The term “binge-like” is used in the manuscript when referring to animal ethanol consumption considering the limitations inherent in preclinical studies to truly reflect the multi-faceted conditions of binge drinking in humans [32, 33]. This work extends our previous findings on alcohol-induced upregulation of a proinflammatory cytokine milieu in the amygdala and hippocampus following acute binge-like consumption by determining the impact of alcohol exposure in the DID model on microglia [34, 35]. The hippocampus and amygdala have been chosen as the focal points because they are integral parts of the neurocircuitry that mediate binge drinking [36, 37].

2. Materials and methods

2.1 Animals

Male C57BL/6J mice (Jackson Laboratory; Bar Harbor, ME, USA) were individually housed in a reversed 12:12 hour light: dark cycle vivarium maintained at 22 °C. During experiments, animals had ad libitum access to water and Teklad Diet® 7912X (Harlan Laboratories Inc.; Indianapolis, IN, USA) unless otherwise indicated [38]. All animals were ordered at seven weeks old and given at least a week to acclimate to the environment before starting experimentation at eight weeks. These procedures were all approved by both High Point University and North Carolina Central's Institutional Animal Care and Use Committees following the Guidelines for the Care and Use of Laboratory Animals [39].

2.2 “Drinking in the Dark” procedures

Binge drinking was modeled using a 4-day DID paradigm as previously described [27, 28]. Briefly, home cage water bottles were removed three hours into the dark cycle. Mice received access to a single ball-bearing volumetric bottle of 20% (v/v) ethanol solution or a control solution of either 3% (w/v) sucrose or water; the presence of the ball-bearings limits leakage during administration. For the first three days of

each cycle, mice had two hours of access, but on the fourth-day consumption (g/kg) was measured over four hours. Mice went through the DID procedure for 1 (H₂O, n = 5; Sucrose, n = 8; Ethanol n = 10) or 3 cycles (H₂O, n = 5; Sucrose, n = 9; Ethanol, n = 7) with each 4-day DID cycle separated by three days. In the PCR studies, mice underwent 1 or 3 cycles with water (n = 8/group) or 1 or 3 cycles with ethanol (N = 61). The ethanol animals were further split into six groups that were euthanized immediately (1 cycle, n = 10; 3 cycle, n = 10), 1 day (1 cycle, n = 10; 3 cycle, n = 10), or 10 days (1 cycle, n = 11; 3 cycle, n = 10), after ethanol exposure [40]. For more details, see the methodology schematic in Fig. 1.

Tail blood samples (≈60 μL) were taken immediately following the final DID procedure to determine BECs. In the qRT-PCR studies, blood samples were not taken in the mice euthanized after 1 or 10 days because previous studies indicate that restraint stress can impact neuroimmune genes. However, for animals euthanized immediately after the DID procedure, trunk blood was taken. Serum was obtained through centrifugation and run-in duplicates using the EnzyChrom™ Ethanol Assay Kit (BioAssay Systems; Hayward, CA, USA) [41–43].

2.3 Immunohistochemistry & immunoreactivity quantification

IHC was conducted to characterize the alcohol-induced microglial response within the amygdala and hippocampus. Following anesthetization with IP administration (0.1 mL) of a ketamine/xylazine cocktail (66.7 mg/mL; 6.7 mg/mL), mice used in IHC experiments were euthanized immediately after 1 or 3 cycles of DID by transcardial perfusion (0.1 M phosphate buffer saline (PBS) and 4% paraformaldehyde in PBS, pH = 7.4). The microglia-specific antibody against Iba-1 was similar to previously published studies [18, 19, 44]. Briefly, every fourth section was rinsed in a 0.1M PBS (pH = 7.4) three times for 5-minutes before a 30-minute incubation in 0.6% H₂O₂. After additional PBS washes, the sections were blocked using goat serum (3% goat serum/0.1% triton-X/PBS) and incubated in the rabbit anti-Iba-1 primary antibody (Wako, Richmond, VA, USA; 1:1000) or rat-anti-Ox-42 (Invitrogen, Camarillo, CA, USA; 1:500) for 48 hours at 4 °C. The primary antibody was removed with a series of PBS washes before incubation with goat anti-rabbit or goat-anti-rat secondary (1:2000; Vector Labs; Burlingame, CA, USA) for an hour. To amplify and visualize the antibody, a conjugate of avidin-biotin-peroxidase complex (ABC elite kit, Vector Labs) and the chromagen 3,3'-diaminobenzidine tetrahydrochloride (Poly-sciences; Warrington, PA, USA) was formed. Processed sections were mounted onto glass slides and coverslipped with SHUR/Mount™ (Triangle Biomedical Sciences; Durham, NC, USA).

Images of the hippocampus and amygdala were captured with a 10× objective using an Olympus DP73 (Olympus, Center Valley, PA, USA) attached to a Nikon Eclipse 80i microscope (Iba-1) or a B120 microscope (AmScope, Irvine, CA, USA) with an attached digital camera (MU500; Am-

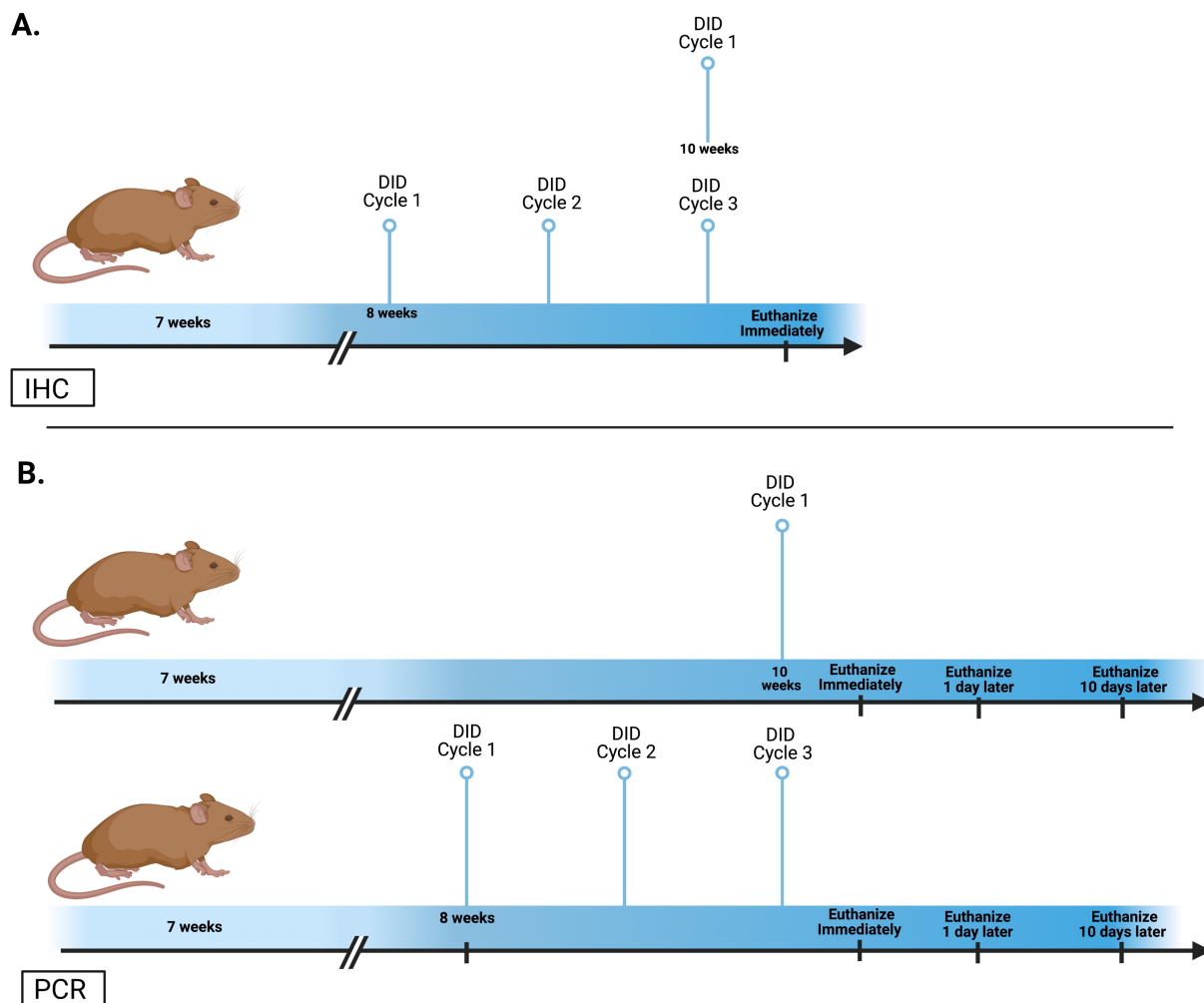


Fig. 1. Timeline of experimental procedures. C57BL/6J mice were used for either immunohistochemistry (A) or PCR (B) after ethanol. In the IHC, mice were given ethanol, water, or sucrose for 1 or 3 DID cycles and were euthanized immediately following their last dose. However, mice only had access to ethanol or water during the DID for PCR. Moreover, ethanol animals were further subdivided into 3 groups euthanized immediately or following 1 or 10 days of abstinence.

Scope, Ox-42). For all images, experimental bias was avoided by coding the image file before quantification. The subregions of the hippocampus (DG, CA1, and CA2/3; between Bregma -1.06 mm and -2.80 mm) and amygdala (BLA and CeA; between Bregma -0.58 mm and -2.36 mm) were individually traced [45]. Immunoreactivity was measured with the open-source software Qupath 0.2.3 (University of Edinburgh, Edinburgh, UK) using experimenter-determined optical density thresholds [46]. Immunoreactivity is expressed as percent area (immunoreactive positive area/total area of ROI) [47]. Microglia were also assessed using profile cell counts of Iba-1 and are expressed as Iba-1+ cells/section [18].

2.4 qRT-PCR

Quantitative polymerase chain reaction (qRT-PCR) was performed similarly to our previous report [47]. Briefly, un-anesthetized mice were euthanized by rapid decapitation, and the hippocampus and amygdala were microdis-

sected out and snap-frozen. RNA was extracted from homogenized hippocampal or amygdala tissue using TRIzolTM reagent ($200\text{ }\mu\text{L}$; Invitrogen). RNA concentration was normalized to $1.5\text{ }\mu\text{g}/\mu\text{L}$ following analysis with a Qubit[®] 3.0 Fluorometer (Invitrogen). Samples were then transcribed to cDNA Synthesis using MaximaTM H Minus cDNA (ThermoScientific; Waltham MA). TaqMan[®] assays (ThermoScientific) were used to determine the relative mRNA expression of Aif-1 (Mm00479862_g1) and Itgam (Mm00434455_m1) compared with an internal control PPIA (Mm02342430_g1). Itgam (Integrin Subunit Alpha M), also known as Cd11b, is upregulated in proinflammatory microglial activation, whereas Aif-1 is associated with all microglia [48]. Measurements were compared to the water groups using the ddCT method and are expressed as the fold change, similar to previous reports [47, 49].

Table 1. Drinking in the Dark Binge Data.

Study	Group	Consumption (g/kg)		BEC (mg/dL)	
		1 week	3 week	1 week	3 week
IHC	Ethanol	5.0 ± 0.4 (n = 9)	4.7 ± 0.4 (n = 10)	114.1 ± 10.4	122.4 ± 19.2
	Sucrose	5.5 ± 0.4 (n = 10)	5.7 ± 0.5 (n = 10)	-	-
	Water	66.5 ± 2.8 (n = 5)	70.0 ± 4.7 (n = 5)	-	-
PCR	Ethanol	5.4 ± 0.3 (n = 16)	4.9 ± 0.2 (n = 16)	102.3 ± 21.3	129.9 ± 15.5
	Water	70.4 ± 3.5 (n = 6)	57.0 ± 6.7 (n = 6)	-	-

2.5 Statistical analysis

Data were analyzed and graphed using GraphPad Prism Version 7 (GraphPad Software, Inc. La Jolla, CA, USA). ANOVAs were used to assess consumption, BECs, immunoreactivity, and cell counts. Posthoc Bonferroni tests were only done if a significant interaction or main effect of ethanol was found. All data are reported as the mean ± standard error and considered significantly different if $p < 0.05$, two-tailed.

3. Results

3.1 Ethanol consumption consistent across groups

Binge-like drinking was not significantly different among the groups used in these experiments (see Table 1). The ethanol consumption data for qRT-PCR animals were collapsed across different time points (e.g., 0-day and 10-day), but BECs only represent animals in the 0-day or primary time point (Table 1). Previous studies have suggested that restraint necessary for BEC measurements may confound neuroimmune messenger ribonucleic acid (mRNA) expression due to stress [40]. Two-way analysis of variances (ANOVAs; Experimental cohort × Number of DID cycles) indicated no interaction or main effects of the experimental cohort (qRT-PCR vs. IHC) or number of cycle on either ethanol or water consumption. Importantly, the average BEC ($\mu = 117.3 \pm 8.8$) for ethanol-treated animals after four hours of consumption was above the threshold of binge-like consumption. A two-way ANOVA (Experimental cohort × Number of DID cycles) did not indicate that the BECs were significantly different between the groups.

3.2 Binge-like consumption has regionally specific Iba-1 immunoreactivity effects

Microglial activation results in morphological changes, which can be assessed using densitometric analysis of immunohistochemical markers like ionized calcium-binding adaptor 1 (Iba-1) [19, 48]. Two-way ANOVAs (Treatment × Number of Cycles) indicated that there was no interaction or main effects of treatment or number of DID cycles on Iba-1 density in the cornu amonis (CA) 1 or CA2/3 regions; however, in the dentate gyrus (DG), an interaction [$F_{(2,43)} = 3.57, p = 0.037$] and the main effect of treatment [$F_{(2,43)} = 4.68, p = 0.015$] but no main effect of number of cycles was observed. Posthoc analyses indicated a significant increase in immunoreactivity in the ethanol group after three cycles (Fig. 2H).

Because immunoreactivity can also be changed by the number of microglia and not just microglial morphological variations, Iba-1+ cells were also counted. The number of microglia seemed to be more sensitive to alcohol exposure than immunoreactivity. Two way ANOVAs (Treatment × Number of Cycles) indicated an interaction between number of cycles and treatment in the DG [$F_{(2,43)} = 16.46, p < 0.0001$], CA1 [$F_{(2,43)} = 21.81, p < 0.0001$], and in the CA2/3 fields [$F_{(2,43)} = 8.53, p < 0.001$]. Posthoc Dunnet's tests indicated an increase in the number of microglia in the DG, CA1, and CA2/3 regions after one cycle of ethanol; however, a decrease after three cycles was observed among ethanol animals in each of the hippocampal subregions (Fig. 2K–M). After ethanol exposure (Fig. 2F, G), photomicrographs show that hippocampal Iba-1+ cells appear to have a more activated morphology than water controls (Fig. 2E). The immunoreactivity per cell was calculated (Table 2). Two-way ANOVAs (Treatment × Number of Cycles) indicated no interaction or main effects on immunoreactivity per cell in either the CA2/3 or the CA1, but in the DG, there was a main effect of ethanol [$F_{(2,43)} = 14.56, p < 0.0001$]. Post-hoc Dunnet's test indicated that after 1 and 3 cycles of ethanol, there was a significant increase in the immunoreactivity/cell compared with the water control group.

There was no effect of ethanol on the microglia of the amygdala. No interaction or main effects of either treatment or number of cycles was observed on Iba-1 immunoreactivity in the basolateral amygdala (BLA) or central amygdala (CeA; Fig. 3). Likewise, a two-way ANOVA indicated no significant influence of ethanol on the microglia number in the BLA or CeA (Fig. 3).

3.3 Increased CR3 expression in microglia after binge-like consumption

Iba-1 is a cytoskeletal protein in microglia whose upregulation suggests morphological changes or increased numbers. However, Ox-42 recognizes the transmembrane complement receptor 3. Its upregulation is purported to indicate increased microglial adhesion to damaged cells and pathogens [19, 50]. Two-way ANOVAs (Treatment × Number of Cycles) indicated that there was no interaction or main effects of treatment or number of DID cycles on Ox-42 immunoreactivity in the CA1 or CA2/3 regions; however, in the DG an interaction [$F_{(2,43)} = 3.58, p = 0.037$] and main effect of treatment [$F_{(2,43)} = 53.6, p < 0.0001$] were observed without a no main effect of number of cycles was observed. Posthoc anal-

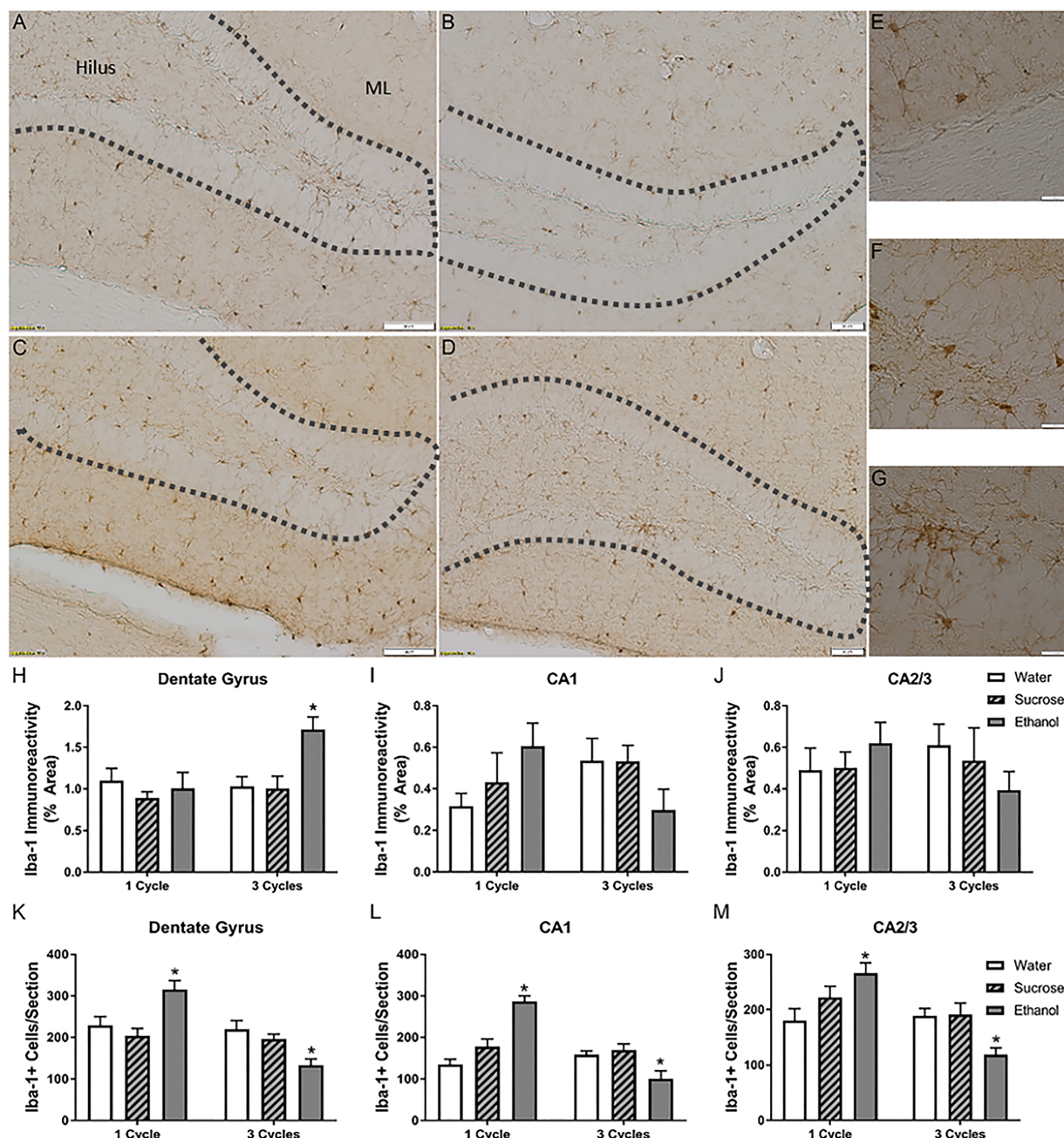


Fig. 2. Binge-like consumption changes hippocampal microglia. Iba-1 immunoreactivity was upregulated in the dentate gyrus. Representative photomicrographs of the dentate gyrus of mice given access to 3 cycles of water (A), 3 cycles of sucrose (B), 1 cycle of EtOH (C), or 3 cycles EtOH (D). The dashed grey lines outline the edges of the granular cell layer of the DG. Insets of microglia after water (E), 1 cycle of EtOH (F), and 3 cycles of EtOH (G) highlight morphological changes in the microglia-induced binge. Quantification of the immunoreactivity (IR) indicated that after 3 cycles of EtOH, there was an increase in the IR in the DG (H) but not the cornu amonis regions (I, J). Cell counts indicated that the number of microglia in the hippocampus increased after ethanol exposure but decreased after 3 cycles (K–M). * $p > 0.05$ compared to water; Scale bars in representative photomicrographs = 50 μm . ML, molecular layer.

yses indicated a significant increase in immunoreactivity in the ethanol group after both one and three cycles of ethanol (Fig. 4E).

3.4 Repeated binge-like consumption causes persisting changes in microglial mRNA

To further explore the changes in microglial reactivity to binge-like consumption, qRT-PCR was used to determine

if changes persisted into abstinence. A two-way ANOVA (Treatment group x Number of Cycles) indicated that there was no interaction or main effects of ethanol or time on *Itgam* expression (Fig. 5B); however, an analysis of *Aif-1* mRNA indicated there was an interaction [$F_{(3,69)} = 3.39, p = 0.023$] and main effect of the number of cycles [$F_{(1,69)} = 4.79, p = 0.032$]. Posthoc Dunnet's test indicated an increase in *Aif-*

Table 2. Immunoreactivity per cell.

Brain Region	Water		Sucrose		Ethanol	
	1 cycle	3 cycles	1 cycle	3 cycles	1 cycle	3 cycles
CA1	0.002 ± 0.0006	0.003 ± 0.0007	0.002 ± 0.0011	0.003 ± 4.6e-4	0.002 ± 0.0003	0.004 ± 0.0017
CA2/3	0.003 ± 0.0007	0.003 ± 0.0005	0.003 ± 0.0006	0.003 ± 0.0011	0.002 ± 0.0005	0.004 ± 0.0009
DG	0.005 ± 0.0013	0.005 ± 0.0010	0.005 ± 0.0007	0.005 ± 0.0007	0.011 ± 0.0023*	0.015 ± 0.0025*

* $p > 0.001$ water compared with ethanol.

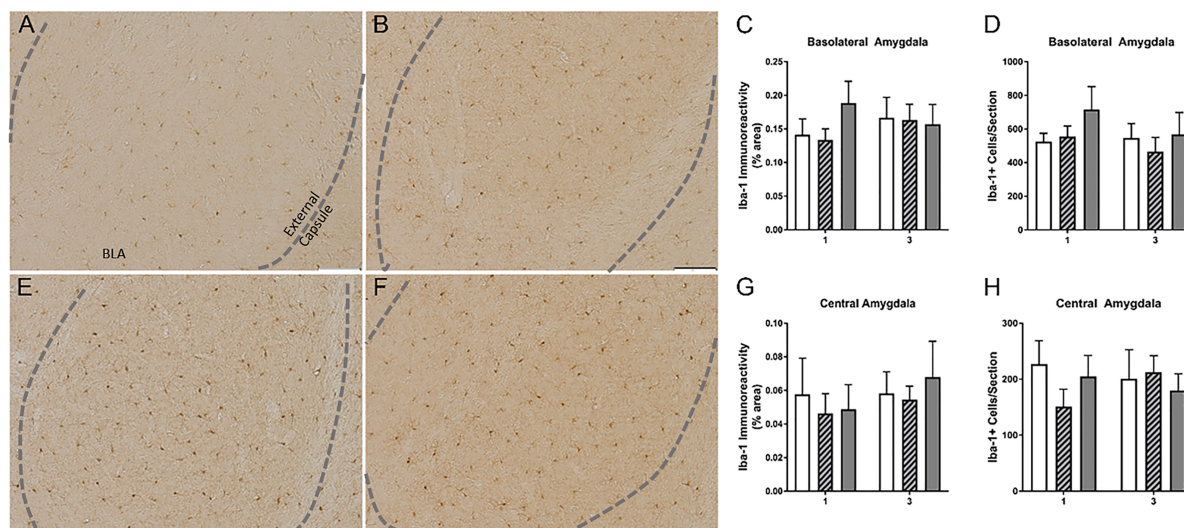


Fig. 3. Binge-like consumption did not significantly impact the microglia of the amygdala. Representative photomicrographs of microglia from the basolateral amygdala (BLA) indicate consistent density and morphology in mice with 3 cycles of water (A), 3 cycles of sucrose (B), 1 cycle of EtOH (E), or 3 cycles EtOH (F). The dashed grey lines outline the ventral boundaries of the external capsule along the BLA. Quantification of the immunoreactivity (IR) indicated that EtOH did not affect the IR in either BLA (C) or the CeA (G). Likewise, no significant differences were observed in the microglia number (D, H). Scale bars in representative photomicrographs = 50 μ m.

1 expression during intoxication after both 1 and 3-DID cycles; however, only after three cycles of ethanol was a significant increase in Aif-1 expression observed during abstinence (Fig. 5A).

4. Discussion

Our previous studies have examined the effects of repetitive binge-like consumption on cytokines and astrocytes [34, 35, 47]. However, this manuscript extends those studies by examining the impact of ethanol consumption in the DID model on microglia. Given the critical role of microglia in modulating psycho-neuroimmune and neuroinflammatory responses [51, 52], highlighting the specific effects of binge-like alcohol consumption on microglia is critical to fully understanding the neuroimmune response associated with excessive alcohol use. The major findings of this paper are that: (1) binge-like ethanol consumption results in changes in the number, morphology, and immunological status of microglia, (2) the hippocampus is more sensitive to alcohol-induced microglial effects than the amygdala, and (3) repeated exposure results in a persistent change in microglial gene expression.

The hippocampus has been repeatedly shown to be susceptible to ethanol abuse affecting important neurologic functions, including neurogenesis [53], memory [54, 55], and neurodegeneration [56, 57]. The interesting thing about neuroimmune dysregulation is that it can impact the aforementioned alcohol-induced effects in the hippocampus [53, 58]. Our results uniquely show that the DID model induces changes in microglia of the hippocampus. Immunohistochemistry analysis initially revealed that binge-like consumption increased immunoreactivity only after three cycles in the DG. Iba-1 immunoreactivity analysis is usually purported to be a sign of microglial activation [59, 60]; however, our qualitative observations of the microglial morphology led us to believe that after one cycle of ethanol exposure, microglia still appeared activated despite the overall decrease in immunoreactivity. We estimated the immunoreactivity per cell by counting the total number of cells, which we believe translates closely to the average microglial size. Our data suggest that after both 1 and 3-DID cycles of ethanol exposure, the immunoreactivity/cell increases. Changes in the morphological presentation of microglia are usually thought to indicate microglial activation. The increase in Ox-42 further supported binge-alcohol-induced microglial activation after

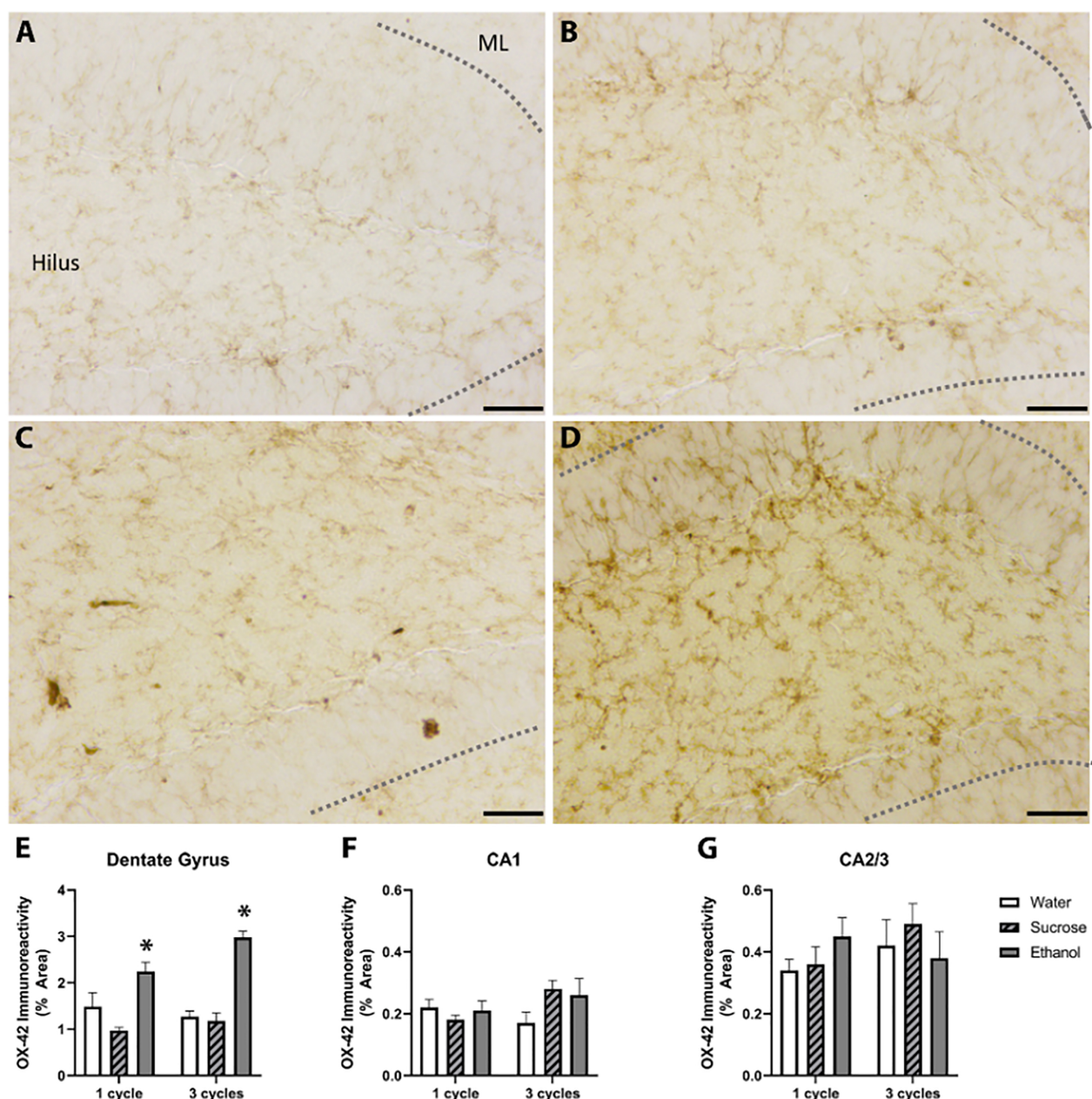


Fig. 4. Binge-like consumption increases microglial expression of the immunologic CR3. Ox-42 immunoreactivity was upregulated in the dentate gyrus. Representative photomicrographs of the dentate gyrus of mice given access to 3 cycles of water (A), 3 cycles of sucrose (B), 1 cycle of EtOH (C), or 3 cycles of EtOH (D). The dashed grey lines outline the edges of the granular cell layer of the DG. Quantification of the immunoreactivity (IR) indicated that after 1 and 3 cycles of EtOH, there were increases in the IR in the DG (E) but not the cornu amonis regions (F, G). * $p < 0.05$ compared to water; Scale bars in representative photomicrographs = 75 μ m. ML, molecular layer.

the DID. Ox-42 upregulation indicates that the microglia are immunologically active. The differential pattern Iba-1 and Ox-42 observed may suggest that microglia populations remained primed despite less robust morphological presentations [18, 61]. Our findings concur with other studies indicating that alcohol can induce increases in Iba-1 and Ox-42 immunoreactivity, including models of alcohol dependence

[62–64], alcohol-induced neurodegeneration [18, 21], and fetal alcohol spectrum disorders [65, 66], but our results have uniquely shown the effects of alcohol before dependence and at much lower BECs.

We also observed a change in microglia number after the DID paradigm. After one cycle of ethanol, there was an increase in microglia throughout the hippocampus. Alcohol-

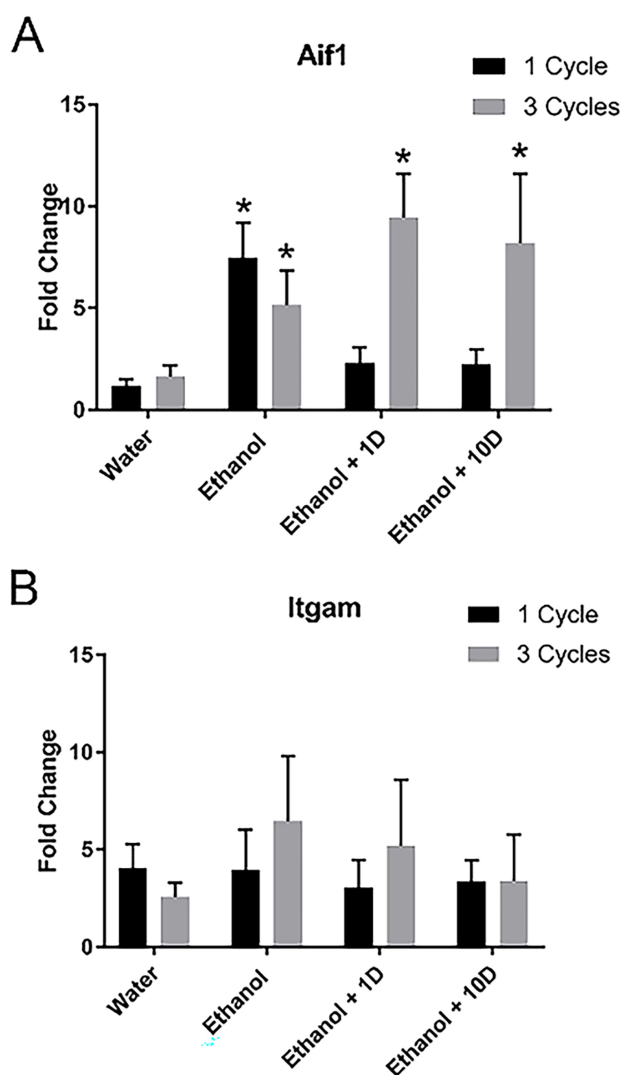


Fig. 5. Ethanol increases microglial mRNA. After both 1 and 3 weeks of ethanol, Aif-1 was significantly upregulated, but only after 3 weeks of ethanol exposure did the increase persist even 10 days after binge-like ethanol consumption (A). No significant changes were observed in Itgam expression (B). * $p > 0.05$ compared to water.

dependent models with higher BECs have reported that microglia begin to proliferate after a period of alcohol abstinence [44, 67], but other rodent models with BECs below binge levels did not observe proliferating microglia even after 7 weeks [68]. Together, these data suggest something unique occurs after binge-like consumption that initially increases the number of microglia compared with other alcohol exposure models. We did not determine whether the increase in microglia was due to a migration of microglia to the hippocampus or microglial cell proliferation. After additional ethanol exposure, our data indicated a significant decrease in the number of microglia in the hippocampus. We did not directly elucidate whether microglia were damaged by repeated exposure, but previous reports have also seen decreases in microglia number in alcohol-related brain damage models [18, 69]. It is important to denote that microglia pro-

liferation and loss are sex-dependent [69, 70], and we only focused on male mice. A decrease in microglia number as alcohol exposure increases may align with the human condition. Imaging studies of alcoholics have shown that a down-regulation in the microglial markers for translocator protein (TSPO) correlates with the dependence severity [71, 72]. An important caveat to consider is that a recent paper [73] observed opposing effects between *in vivo* imaging and autoradiography using TSPO markers. The loss discovered after just three weeks of repetitive binge-like consumption in a model of non-dependence may be the precursor to the glial changes that occur during alcohol-dependence.

Our studies found no effects of DID ethanol consumption on the microglia of the amygdala. This was surprising given that microglia are the initial responders in a neuroimmune response. We have previously found that binge-like consumption is associated with a more proinflammatory cytokine environment in the BLA [34, 35]. Because the hippocampus and amygdala are both susceptible to alcohol-induced neuroplasticity, we expected similar findings between the hippocampus and the amygdala [73, 74]. However, the differences observed herein between the regions may indicate that withdrawal and/or chronic ethanol exposure is integral for changes in the amygdala. Our data only looked at microglia during intoxication in the amygdala. It is also possible that the lack of changes in the amygdala may be associated with the lower density of Iba-1 in the region compared with the hippocampus. A recent meta-analysis attempted to determine the relative density of microglia in the mouse brain. Still, there was insufficient evidence for any strong conclusions concerning microglia in the amygdala compared with other regions [75]. However, in the hippocampus, the DG and CA1 regions, where the microglia appear to be most susceptible to alcohol, have a greater density of microglial cells than the CA2/3 region [75, 76]. Moreover, in pathologies like aging, hippocampal microglia appear more reactive than other brain regions [77]. Our recent work suggests that excessive alcohol intake may interact with aging cascades to dysregulate microglia [43]. Whether the lack of effect observed herein is due to differences in basal density or reactivity is unknown. However, our data does agree with other studies that did not find that ethanol impacted microglia in the amygdala [78]. Future studies should explore other regions correlated to alcohol abuse and control regions to determine the uniqueness of the hippocampal findings. At a minimum, our results show that hippocampal microglia are more sensitive to repetitive alcohol consumption compared with the amygdala.

To determine whether the alcohol-induced changes in microglia of the hippocampus persisted into abstinence, we elected to use qRT-PCR. After one 4-Day DID cycle of ethanol exposure, Aif-1 mRNA initially increases but appears to quickly resolve in abstinence. Conversely, the increase in Aif-1 mRNA was present during intoxication and persisted even 10 days after binge-like consumption. No changes were

seen in *Itgam* after ethanol exposure, but this may be because the concentration of mRNA of *Itgam* was lower than either *Aif-1* according to the average cycle threshold (CT) values of the water group. The lower expression of *Itgam* compared with other markers of microglia has previously been observed [79] and reinforces the hypothesis that *Itgam* or *CD11b* is a marker of more activated microglia compared with *Aif-1* (also known as *Iba-1*) [19, 48]. Other AUD models have also reported that ethanol affects the microglial transcriptome, including research examining the prefrontal cortex in the DID model [17, 80]. We, however, uniquely examined the impact of repetitive binge drinking in the hippocampus. Together this information may indicate that binge-like consumption drives changes in microglia that are not fully activated or proinflammatory at BECs that are often observed in non-dependent, problematic alcohol drinkers [81]. Previous research agrees with these findings that as ethanol exposure increases, it drives the microglial response to a more pro-inflammatory state [18, 82], especially as it relates to the microglial transcriptome [17]. Furthermore, these findings concur with other research showing that acute ethanol only causes transient microglial morphology changes compared with more chronic use [83].

5. Conclusions

The impact of binge-like consumption on neuroinflammation continues to be of interest. Alcohol-induced neuroinflammatory signaling can underlie both the behavioral and biological consequences observed in the development of AUDs. Our data reveal how binge drinking impacts the microglial response before dependence without significant neurodegeneration. Given that the BECs elicited by this model (~100 mg/dL) is much lower than the previous studies of alcohol-related brain damage (~300 mg/dL) that showed microglial activation, it could indicate that repetitive binge consumption is problematic, rather than dependent individuals, may lead to maladaptations in the glial responses. Because alcohol abuse is comorbid with so many other conditions that affect the neuroimmune response, including aging, infections, and traumatic brain injury, these data provide a snapshot to consider how binge-like consumption's alteration of microglia may contribute to the worsening of neuroinflammatory events and promote further alcohol misuse.

Abbreviations

AUDs, Alcohol Use Disorders; *Aif-1*, Allograft Inflammatory Factor 1; ANOVAs, Analysis of Variances; BLA, Basolateral Amygdala; BECs, Blood Ethanol Concentrations; CeA, Central Amygdala; CA, Cornu Amonis; CT, Cycle Threshold; DG, Dentate Gyrus; DID, Drinking-in-the-Dark; IHC, Immunohistochemistry; *ITGAM*, Integrin alpha M; *Iba-1*, Ionized Calcium Binding Adaptor 1; mRNA, Messenger Ribonucleic Acid; PBS, Phosphate Buffer Saline; TSPO, Quantitative Reverse Transcription; Translocator Protein.

Author contributions

SAM conceived and designed the experiments. JCN, EG, KNN and IRG were integral in performing the experiments and analyzing the data. SAM, JCN, EG, KNN and IRG wrote the manuscript. SAM contributed reagents/materials/analysis tools.

Ethics approval and consent to participate

Animals were raised and handled at the North Carolina Central University Animal Resource Complex or in the facilities at High Point University. All animal experiments were approved by both High Point University and North Carolina Central's Institutional Animal Care and Use Committees in accordance to the Guidelines for the Care and Use of Laboratory Animals (SAM-11-22-2019, 2016-04-05).

Acknowledgment

The authors would like to specifically acknowledge the contributions of Lauren Dorn, Drew Evans, and Scot McIntosh in the preparation of this manuscript.

Funding

This work was supported by the generous support of High Point University, National Institute on Alcohol Abuse and Alcoholism, grant number U54AA019765, U01 AA019925-11; National Institute of General Medical Sciences, grant number, SC1GM139696 and the US Department of Education.

Conflict of interest

The authors declare no conflict of interest.

References

- [1] Grant BF, Saha TD, Ruan WJ, Goldstein RB, Chou SP, Jung J, *et al*. Epidemiology of DSM-5 Drug Use Disorder: Results from the National Epidemiologic Survey on Alcohol and Related Conditions-III. *JAMA Psychiatry*. 2016; 73: 39–47.
- [2] Bloomfield K, Stockwell T, Gmel G, Rehn N. International comparisons of alcohol consumption. *Alcohol Research and Health*. 2003; 27: 95–109.
- [3] Bouchery EE, Harwood HJ, Sacks JJ, Simon CJ, Brewer RD. Economic Costs of Excessive Alcohol Consumption in the U.S., 2006. *American Journal of Preventive Medicine*. 2011; 41: 516–524.
- [4] NIAA. NIAAA Council Approves Definition of Binge Drinking. 2004. Available at : https://pubs.niaaa.nih.gov/publications/Newsletter/winter2004/Newsletter_Number3.pdf (Assessed: 2 July 2021).
- [5] Gunzerath L, Hewitt BG, Li T, Warren KR. Alcohol research: past, present, and future. *Annals of the New York Academy of Sciences*. 2011; 1216: 1–23.
- [6] Centers for Disease C, Prevention. Vital signs: binge drinking prevalence, frequency, and intensity among adults - United States, 2010. *Morbidity and Mortality Weekly Report*. 2012; 61: 14–19.
- [7] Der-Avakian A, Markou A. The neurobiology of anhedonia and other reward-related deficits. *Trends in Neurosciences*. 2012; 35: 68–77.
- [8] Thiele TE, Navarro M. "Drinking in the dark" (did) procedures: a model of binge-like ethanol drinking in non-dependent mice. *Alcohol*. 2014; 48: 235–241.

- [9] Ginhoux F, Lim S, Hoeffel G, Low D, Huber T. Origin and differentiation of microglia. *Frontiers in Cellular Neuroscience*. 2013; 7: 45.
- [10] Sierra A, de Castro F, Del Rio-Hortega J, Rafael Iglesias-Rozas J, Garrosa M, Kettenmann H. The “Big-Bang” for modern glial biology: Translation and comments on Pio del Río-Hortega 1919 series of papers on microglia. *Glia*. 2016; 64: 1801–1840.
- [11] Tremblay M, Stevens B, Sierra A, Wake H, Bessis A, Nimmerjahn A. The role of microglia in the healthy brain. *Journal of Neuroscience*. 2011; 31: 16064–16069.
- [12] Carson MJ, Bilousova TV, Puntambekar SS, Melchior B, Doose JM, Ethell IM. A rose by any other name? the potential consequences of microglial heterogeneity during CNS health and disease. *Neurotherapeutics*. 2007; 4: 571–579.
- [13] Stephan AH, Barres BA, Stevens B. The complement system: an unexpected role in synaptic pruning during development and disease. *Annual Review of Neuroscience*. 2012; 35: 369–389.
- [14] Nimmerjahn A, Kirchhoff F, Helmchen F. Resting microglial cells are highly dynamic surveillants of brain parenchyma in vivo. *Science*. 2005; 308: 1314–1318.
- [15] Sierra A, Encinas JM, Deudero JJP, Chancey JH, Enikolopov G, Overstreet-Wadiche LS, *et al.* Microglia shape adult hippocampal neurogenesis through apoptosis-coupled phagocytosis. *Cell Stem Cell*. 2010; 7: 483–495.
- [16] Lee KM, Coelho MA, McGregor HA, Solton NR, Cohen M, Szumlinski KK. Adolescent Mice are Resilient to Alcohol Withdrawal-Induced Anxiety and Changes in Indices of Glutamate Function within the Nucleus Accumbens. *Frontiers in Cellular Neuroscience*. 2016; 10: 265.
- [17] Osterndorff-Kahanek E, Ponomarev I, Blednov YA, Harris RA. Gene expression in brain and liver produced by three different regimens of alcohol consumption in mice: comparison with immune activation. *PLoS ONE*. 2013; 8: e59870.
- [18] Marshall SA, Geil CR, Nixon K. Prior Binge Ethanol Exposure Potentiates the Microglial Response in a Model of Alcohol-Induced Neurodegeneration. *Brain Sciences*. 2016; 6: 16.
- [19] Marshall SA, McClain JA, Kelso ML, Hopkins DM, Pauly JR, Nixon K. Microglial activation is not equivalent to neuroinflammation in alcohol-induced neurodegeneration: the importance of microglia phenotype. *Neurobiology of Disease*. 2013; 54: 239–251.
- [20] Coleman LG, Zou J, Crews FT. Microglial-derived miRNA let-7 and HMGB1 contribute to ethanol-induced neurotoxicity via TLR7. *Journal of Neuroinflammation*. 2017; 14: 22.
- [21] Peng H, Geil Nickell CR, Chen KY, McClain JA, Nixon K. Increased expression of M1 and M2 phenotypic markers in isolated microglia after four-day binge alcohol exposure in male rats. *Alcohol*. 2017; 62: 29–40.
- [22] Esser MB, Hedden SL, Kanny D, Brewer RD, Gfroerer JC, Naimi TS. Prevalence of alcohol dependence among us adult drinkers, 2009–2011. *Preventing Chronic Disease*. 2014; 11: E206.
- [23] Sprow GM, Thiele TE. The neurobiology of binge-like ethanol drinking: evidence from rodent models. *Physiology & Behavior*. 2012; 106: 325–331.
- [24] Gilpin NW, Koob GF. Neurobiology of alcohol dependence: focus on motivational mechanisms. *Alcohol Research & Health*. 2008; 31: 185–195.
- [25] Valdez GR, Koob GF. Allostasis and dysregulation of corticotropin-releasing factor and neuropeptide Y systems: implications for the development of alcoholism. *Pharmacology, Biochemistry, and Behavior*. 2004; 79: 671–689.
- [26] Edwards S, Koob GF. Neurobiology of dysregulated motivational systems in drug addiction. *Future Neurology*. 2010; 5: 393–401.
- [27] Rhodes JS, Best K, Belknap JK, Finn DA, Crabbe JC. Evaluation of a simple model of ethanol drinking to intoxication in C57BL/6J mice. *Physiology & Behavior*. 2005; 84: 53–63.
- [28] Cox BR, Olney JJ, Lowery-Gionta EG, Sprow GM, Rinker JA, Navarro M, *et al.* Repeated cycles of binge-like ethanol (EtOH)-drinking in male C57BL/6J mice augments subsequent voluntary EtOH intake but not other dependence-like phenotypes. *Alcoholism, Clinical and Experimental Research*. 2013; 37: 1688–1695.
- [29] Lee KM, Coelho MA, Solton NR, Szumlinski KK. Negative Affect and Excessive Alcohol Intake Incubate during Protracted Withdrawal from Binge-Drinking in Adolescent, but not Adult, Mice. *Frontiers in Psychology*. 2017; 8: 1128.
- [30] Bobak M, Room R, Pikhart H, Kubinova R, Malyutina S, Pajak A, *et al.* Contribution of drinking patterns to differences in rates of alcohol related problems between three urban populations. *Journal of Epidemiology and Community Health*. 2004; 58: 238–242.
- [31] Epstein EE, Labouvie E, McCrady BS, Swingle J, Wern J. Development and validity of drinking pattern classification: binge, episodic, sporadic, and steady drinkers in treatment for alcohol problems. *Addictive Behaviors*. 2004; 29: 1745–1761.
- [32] Crabbe JC, Harris RA, Koob GF. Preclinical studies of alcohol binge drinking. *Annals of the New York Academy of Sciences*. 2011; 1216: 24–40.
- [33] Jeanblanc J, Rolland B, Gierski F, Martinetti MP, Naassila M. Animal models of binge drinking, current challenges to improve face validity. *Neuroscience & Biobehavioral Reviews*. 2019; 106: 112–121.
- [34] Marshall SA, Casachua JD, Rinker JA, Blose AK, Lysle DT, Thiele TE. IL-1 receptor signaling in the basolateral amygdala modulates binge-like ethanol consumption in male C57BL/6J mice. *Brain, Behavior, and Immunity*. 2016; 51: 258–267.
- [35] Marshall SA, McKnight KH, Blose AK, Lysle DT, Thiele TE. Modulation of Binge-like Ethanol Consumption by IL-10 Signaling in the Basolateral Amygdala. *Journal of Neuroimmune Pharmacology*. 2017; 12: 249–259.
- [36] Gilpin NW, Herman MA, Roberto M. The central amygdala as an integrative hub for anxiety and alcohol use disorders. *Biological Psychiatry*. 2015; 77: 859–869.
- [37] Hwa L, Besheer J, Kash T. Glutamate plasticity woven through the progression to alcohol use disorder: a multi-circuit perspective. *F1000Research*. 2017; 6: 298.
- [38] Marshall SA, Rinker JA, Harrison LK, Fletcher CA, Herfel TM, Thiele TE. Assessment of the Effects of 6 Standard Rodent Diets on Binge-Like and Voluntary Ethanol Consumption in Male C57BL/6J Mice. *Alcoholism, Clinical and Experimental Research*. 2015; 39: 1406–1416.
- [39] National Research Council. Guide for the Care and Use of Laboratory Animals. The National Academies Press: Washington, DC. 1996.
- [40] Walker FR, Nilsson M, Jones K. Acute and chronic stress-induced disturbances of microglial plasticity, phenotype and function. *Current Drug Targets*. 2013; 14: 1262–1276.
- [41] Paris JJ, Frye CA. Alcohol Dose-Dependently Enhances 3 α -androstenediol Formation in Frontal Cortex of Male Rats Concomitant with Aggression. *The Open Neuropsychopharmacology Journal*. 2009; 2: 1–11.
- [42] Jeong W, Osei-Hyiaman D, Park O, Liu J, Bátkai S, Mukhopadhyay P, *et al.* Paracrine Activation of Hepatic CB1 Receptors by Stellate Cell-Derived Endocannabinoids Mediates Alcoholic Fatty Liver. *Cell Metabolism*. 2008; 7: 227–235.
- [43] Grifasi IR, Evans WA, Rexha AD, Sako LW, Marshall SA. A comparison of hippocampal microglial responses in aged and young rodents following dependent and non-dependent binge drinking. *International Review of Neurobiology*. 2019; 32: 305–343.
- [44] McClain JA, Morris SA, Deeny MA, Marshall SA, Hayes DM, Kiser ZM, *et al.* Adolescent binge alcohol exposure induces long-lasting partial activation of microglia. *Brain, Behavior, and Immunity*. 2011; 25 Suppl 1: S120–S128.
- [45] Paxinos G, Franklin KBJ. The mouse brain in stereotaxic coordinates. Elsevier Academic Press: Amsterdam, Boston. 2004.
- [46] Bankhead P, Loughrey MB, Fernández JA, Dombrowski Y, McArt DG, Dunne PD, *et al.* QuPath: Open source software for digital pathology image analysis. *Scientific Reports*. 2017; 7: 16878.
- [47] Grifasi I, McIntosh S, Thomas R, Lysle D, Thiele T, Marshall SA. Characterization of the Hippocampal Neuroimmune Response to

- Binge-Like Ethanol Consumption in the Drinking in the Dark Model. *Neuroimmunomodulation*. 2019; 26: 19–32.
- [48] Raivich G, Bohatschek M, Kloss CU, Werner A, Jones LL, Kreutzberg GW. Neuroglial activation repertoire in the injured brain: graded response, molecular mechanisms and cues to physiological function. *Brain Research. Brain Research Reviews*. 1999; 30: 77–105.
- [49] Kim H, Lee G, John SWM, Maeda N, Smithies O. Molecular phenotyping for analyzing subtle genetic effects in mice: application to an angiotensinogen gene titration. *Proceedings of the National Academy of Sciences of the United States of America*. 2002; 99: 4602–4607.
- [50] Relman D, Tuomanen E, Falkow S, Golenbock DT, Saukkonen K, Wright SD. Recognition of a bacterial adhesion by an integrin: macrophage CR3 (alpha M beta 2, CD11b/CD18) binds filamentous hemagglutinin of *Bordetella pertussis*. *Cell*. 1990; 61: 1375–1382.
- [51] Lacagnina MJ, Rivera PD, Bilbo SD. Glial and Neuroimmune Mechanisms as Critical Modulators of Drug Use and Abuse. *Neuropsychopharmacology*. 2017; 42: 156–177.
- [52] Yang L, Zhou Y, Jia H, Qi Y, Tu S, Shao A. Affective Immunology: The Crosstalk Between Microglia and Astrocytes Plays Key Role? *Front in Immunology*. 2020; 11: 1818.
- [53] Geil CR, Hayes DM, McClain JA, Liput DJ, Marshall SA, Chen KY, *et al*. Alcohol and adult hippocampal neurogenesis: promiscuous drug, wanton effects. *Progress in Neuro-Psychopharmacology & Biological Psychiatry*. 2014; 54: 103–113.
- [54] White AM, Swartzwelder HS. Age-related effects of alcohol on memory and memory-related brain function in adolescents and adults. *Recent Developments in Alcoholism*. 2005; 17: 161–176.
- [55] White AM, Kraus CL, Swartzwelder H. Many college freshmen drink at levels far beyond the binge threshold. *Alcoholism, Clinical and Experimental Research*. 2006; 30: 1006–1010.
- [56] Crews FT, Sarkar DK, Qin L, Zou J, Boyadjieva N, Vetreno RP. Neuroimmune Function and the Consequences of Alcohol Exposure. *Alcohol Research*. 2015; 37: 341–351.
- [57] Zahr NM, Kaufman KL, Harper CG. Clinical and pathological features of alcohol-related brain damage. *Nature Reviews. Neurology*. 2011; 7: 284–294.
- [58] Lynch MA. Neuroinflammatory changes negatively impact on LTP: a focus on IL-1 β . *Brain Research*. 2015; 1621: 197–204.
- [59] Ito D, Imai Y, Ohsawa K, Nakajima K, Fukuuchi Y, Kohsaka S. Microglia-specific localisation of a novel calcium binding protein, Iba1. *Brain Research. Molecular Brain Research*. 1998; 57: 1–9.
- [60] Ito D, Tanaka K, Suzuki S, Dembo T, Fukuuchi Y. Enhanced expression of Iba1, ionized calcium-binding adapter molecule 1, after transient focal cerebral ischemia in rat brain. *Stroke*. 2001; 32: 1208–1215.
- [61] Ramaglia V, Hughes TR, Donev RM, Ruseva MM, Wu X, Huitinga I, *et al*. C3-dependent mechanism of microglial priming relevant to multiple sclerosis. *Proceedings of the National Academy of Sciences of the United States of America*. 2012; 109: 965–970.
- [62] Qin L, Crews FT. NADPH oxidase and reactive oxygen species contribute to alcohol-induced microglial activation and neurodegeneration. *Journal of Neuroinflammation*. 2012; 9: 5.
- [63] Walter TJ, Crews FT. Microglial depletion alters the brain neuroimmune response to acute binge ethanol withdrawal. *Journal of Neuroinflammation*. 2017; 14: 86.
- [64] Sanchez-Alavez M, Nguyen W, Mori S, Wills DN, Otero D, Ehlers CL, *et al*. Time course of microglia activation and brain and blood cytokine/chemokine levels following chronic ethanol exposure and protracted withdrawal in rats. *Alcohol*. 2019; 76: 37–45.
- [65] Drew PD, Johnson JW, Douglas JC, Phelan KD, Kane CJM. Pioglitazone blocks ethanol induction of microglial activation and immune responses in the hippocampus, cerebellum, and cerebral cortex in a mouse model of fetal alcohol spectrum disorders. *Alcoholism, Clinical and Experimental Research*. 2015; 39: 445–454.
- [66] Kane CJ, Phelan KD, Han L, Smith RR, Xie J, Douglas JC, *et al*. Protection of neurons and microglia against ethanol in a mouse model of fetal alcohol spectrum disorders by peroxisome proliferator-activated receptor-gamma agonists. *Brain, Behavior, and Immunity*. 2011; 25: S137–145.
- [67] Nixon K, Kim DH, Potts EN, He J, Crews FT. Distinct cell proliferation events during abstinence after alcohol dependence: Microglia proliferation precedes neurogenesis. *Neurobiology of Disease*. 2008; 31: 218–229.
- [68] He J, Overstreet DH, Crews FT. Abstinence from Moderate Alcohol Self-Administration Alters Progenitor Cell Proliferation and Differentiation in Multiple Brain Regions of Male and Female P Rats. *Alcoholism: Clinical and Experimental Research*. 2009; 33: 129–138.
- [69] Barton EA, Baker C, Leasure JL. Investigation of Sex Differences in the Microglial Response to Binge Ethanol and Exercise. *Brain Sciences*. 2017; 7:139.
- [70] Rosen S, Ham B, Mogil JS. Sex differences in neuroimmunity and pain. *Journal of Neuroscience Research*. 2017; 95: 500–508.
- [71] Kalk NJ, Guo Q, Owen D, Cherian R, Erritzoe D, Gilmour A, *et al*. Decreased hippocampal translocator protein (18 kDa) expression in alcohol dependence: a [11 C]PBR28 PET study. *Translational Psychiatry*. 2017; 7: e996.
- [72] Hillmer AT, Sandiego CM, Hannestad J, Angarita GA, Kumar A, McGovern EM, *et al*. In vivo imaging of translocator protein, a marker of activated microglia, in alcohol dependence. *Molecular Psychiatry*. 2017; 22: 1759–1766.
- [73] Vilpoux C, Warnault V, Pierrefiche O, Daoust M, Naassila M. Ethanol-Sensitive Brain Regions in Rat and Mouse: a Cartographic Review, Using Immediate Early Gene Expression. *Alcoholism: Clinical and Experimental Research*. 2009; 33: 945–969.
- [74] Kerns RT. Ethanol-Responsive Brain Region Expression Networks: Implications for Behavioral Responses to Acute Ethanol in DBA/2J versus C57BL/6J Mice. *Journal of Neuroscience*. 2005; 25: 2255–2266.
- [75] Keller D, Erö C, Markram H. Cell Densities in the Mouse Brain: a Systematic Review. *Frontiers in Neuroanatomy*. 2018; 12: 83.
- [76] Jinno S, Fleischer F, Eckel S, Schmidt V, Kosaka T. Spatial arrangement of microglia in the mouse hippocampus: a stereological study in comparison with astrocytes. *Glia*. 2007; 55: 1334–1347.
- [77] Grabert K, Michael T, Karavolos MH, Clohisey S, Baillie JK, Stevens MP, *et al*. Microglial brain region-dependent diversity and selective regional sensitivities to aging. *Nature Neuroscience*. 2016; 19: 504–516.
- [78] Walter TJ, Vetreno RP, Crews FT. Alcohol and Stress Activation of Microglia and Neurons: Brain Regional Effects. *Alcoholism, Clinical and Experimental Research*. 2017; 41: 2066–2081.
- [79] Lively S, Lam D, Wong R, Schlichter LC. Comparing Effects of Transforming Growth Factor beta1 on Microglia From Rat and Mouse: Transcriptional Profiles and Potassium Channels. *Frontiers in Cellular Neuroscience*. 2018; 12: 115.
- [80] McCarthy GM, Farris SP, Blednov YA, Harris RA, Mayfield RD. Microglial-specific transcriptome changes following chronic alcohol consumption. *Neuropharmacology*. 2018; 128: 416–424.
- [81] Courtney KE, Polich J. Binge drinking in young adults: Data, definitions, and determinants. *Psychological Bulletin*. 2009; 135: 142–156.
- [82] Zhao Y, Wang F, Fan Y, Ping G, Yang J, Wu C. Activated microglia are implicated in cognitive deficits, neuronal death, and successful recovery following intermittent ethanol exposure. *Behavioural Brain Research*. 2013; 236: 270–282.
- [83] Ahlers KE, Karacay B, Fuller L, Bonthius DJ, Dailey ME. Transient activation of microglia following acute alcohol exposure in developing mouse neocortex is primarily driven by BAX-dependent neurodegeneration. *Glia*. 2015; 63: 1694–1713.